

AqualissTM
Eye Contour

EYELISSTM 3%

Combination of 3 active molecules in solution:
hesperidin methyl chalcone, dipeptide VW and
lipopeptide Pal-GQPR.

**Anti-inflammatory effect of
peptide Pal-GQPR**

Regulation of UV induced
IL6 level produced by keratinocytes

-33%

**Drainage stimulation
of dipeptide VW**

Inhibition of Angiotensin
Converting Enzyme (ACE)

85%

Before



After



**Innovative and Research
Brand in India**

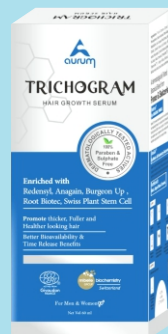
AqualissTM
Eye Contour



**Nano
Pigmento**TM



TRICHOGRAM
HAIR GROWTH SERUM



InozelTM
pro



Customer Care Number

+91 8866 00 8024 / +91 9974 00 8024



Corporate Office

Shop No. 6, Gf, Neelgiri Complex, Nr.Saibaba Temple,
B/h. Sola Bhagwat, Sola, Ahmedabad, Gujarat-380060.

www.pearlpharma.co.in

Enhances Eyes Lightening



Creating Value Through
**Innovative &
Affordable**
Eye Care Products

AqualissTM
Eye Contour



SUBSIDIARY OF PEARL PHARMA

A New Perspective On Influencing The Mechanism of Melanogenesis

AqualissTM
Eye Contour

BENEFITS

- ▶ Reduce under-eye puffiness and dark circles
- ▶ Reduce the appearance of fine lines and wrinkles
- ▶ Helps replenish moisture, soothe and rejuvenate

KEY INGREDIENTS

- ▶ EyelissTM
- ▶ AquaxylTM
- ▶ Matrixyl 3000[®]
- ▶ LumiskinTM
- ▶ N-Acetyl glucosamine
- ▶ Allantoin
- ▶ Hyaluronic Acid
- ▶ Liquorice extract
- ▶ Cucumber extract
- ▶ Coffee extract
- ▶ Vitamin A
- ▶ Vitamin E



AqualissTM
Eye Contour

LUMISKINTM **4%**

Test On Melanocyte B16 Line

Inhibition of Tyrosinase Activity

53%

Decrease in Melanin Quantity

70%

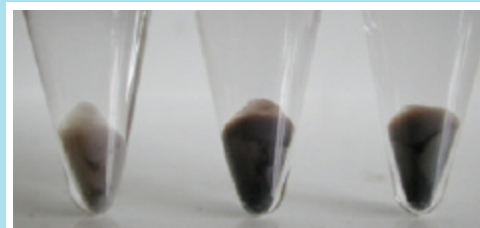
Test On Human Melanocytes

Decrease in Melanin Synthesis

51%

Effect on Melanin Production

The efficacy of DAB (Diacetyl Boldine) on melanogenesis is visible to the naked eye.



DAB

Control

Kojic acid

AqualissTM
Eye Contour

MATRIXYL[®] **3%**
3000

Matrixyl 3000[®] supports activation of the cutaneous repair process, and in particular in the fragile and UV-damage prone papillary dermis. Matrixyl 3000[®] promotes wrinkle smoothing and improves tone and elasticity.

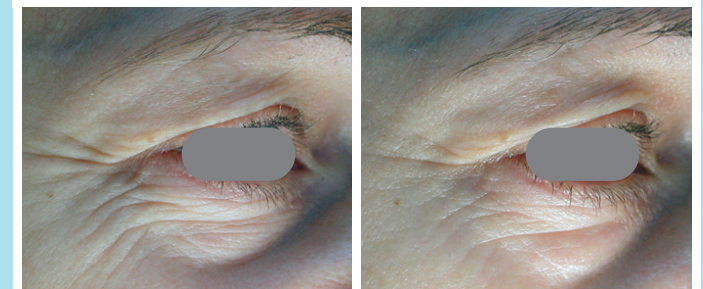
Significant improvement in SLEB characteristics in just one month (Thickness: 5.5% Placebo; density: +7.8%Placebo, on the inner arm) **and confirmed after two months.** The ageing process is slowed down by

1.8 years

in just one month.

TO

T2 months



Repairing effect on Matrixyl 3000[®] improves visible skin appearance by decreasing wrinkles and promoting tone and elasticity.